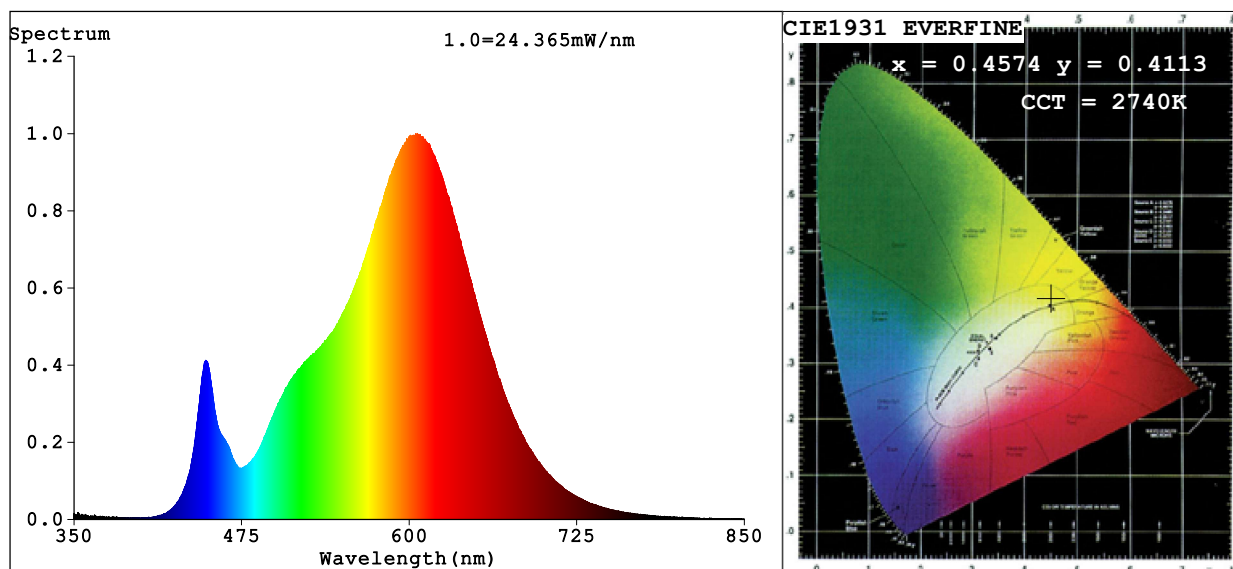


Spectrum Test Report



Color Parameters:

Chromaticity Coordinate: $x=0.4574$ $y=0.4113$ $u'=0.2606$ $v'=0.5272$

CCT=2740K (Duv=0.0005) Dominant WL:Ld =583.8nm Purity=60.8%

Ratio:R=24.6% G=73.2% B=2.2%; Peak WL:Lp=606.2nm FWHM=109.9nm

Render Index:Ra=81.2 CRI=76.0 TM30:Rf=81 Rg=96

R1 =80 R2 =91 R3 =95 R4 =79 R5 =80 R6 =90 R7 =81

R8 =54 R9 =0 R10=80 R11=80 R12=75 R13=82 R14=98 R15=71

Photo Parameters:

Flux = 1103 lm Eff. : 109.74 lm/W Fe = 3.321 W

Electrical parameters:

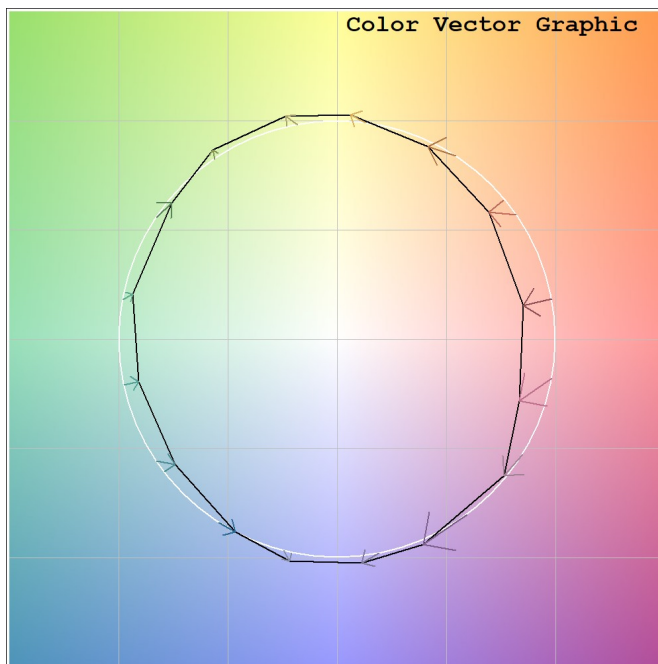
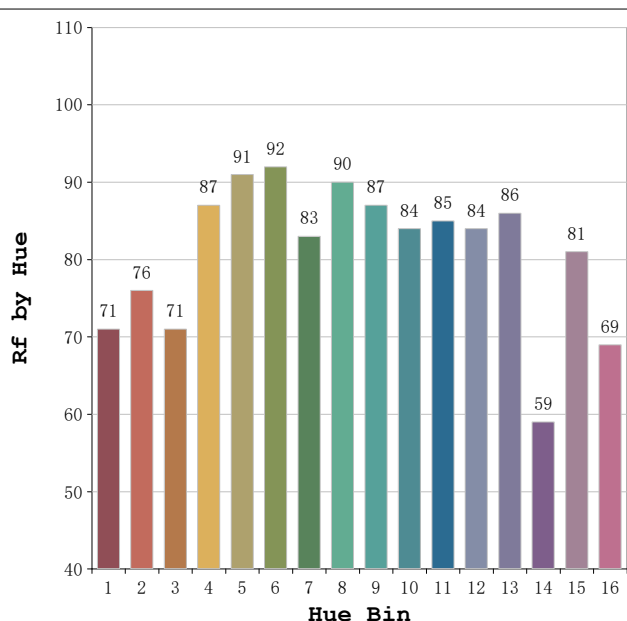
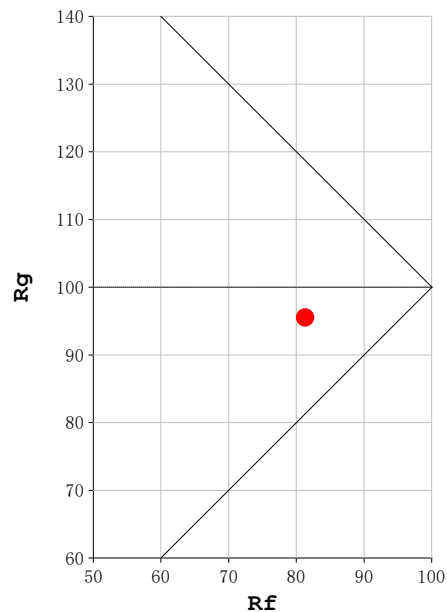
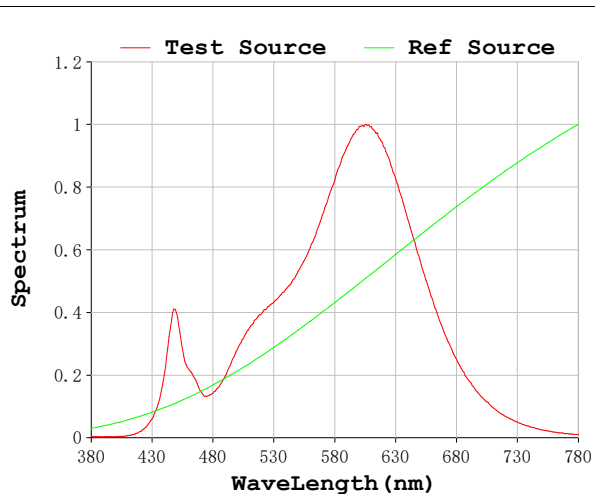
V = 23.998 V I = 0.4187 A P = 10.05 W PF = 1.000

Status: Integral T = 1029 ms Ip = 49736 (76%)

Model:Ecoled Roll to roll
Tester:Sergio Carneros
Temperature:20Deg
Manufacturer:Luz Negra

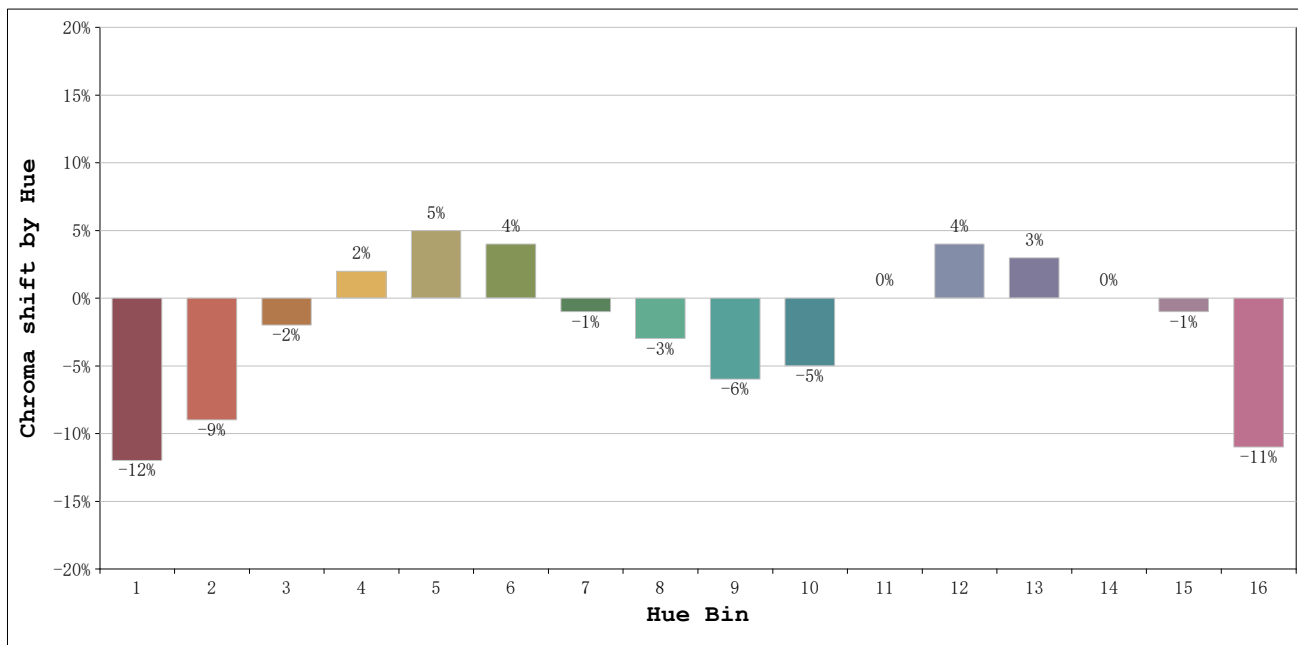
Number: 31.270
Date:2025-06-17 08:12:27
Humidity:50%
Remarks:100cm de tira flexible

Rf: 81 **CCT: 2740 K** **u': 0.2606**
Rg: 96 **Duv: 0.0005** **v': 0.5272**



Model:Ecoled Roll to roll
 Tester:Sergio Carneros
 Temperature:20Deg
 Manufacturer:Luz Negra

Number: 31.270
 Date:2025-06-17 08:12:27
 Humidity:50%
 Remarks:100cm de tira flexible



			Graphic shift(%)	
Hue Bin	Hue Angle	Rf	Chroma	Hue
1	0.0° - 22.5°	71	-12	0
2	22.5° - 45.0°	76	-9	8
3	45.0° - 67.5°	71	-2	13
4	67.5° - 90.0°	87	2	8
5	90.0° - 112.5°	91	5	4
6	112.5° - 135.0°	92	4	-1
7	135.0° - 157.5°	83	-1	-8
8	157.5° - 180.0°	90	-3	-2
9	180.0° - 202.5°	87	-6	0
10	202.5° - 225.0°	84	-5	6
11	225.0° - 247.5°	85	0	9
12	247.5° - 270.0°	84	4	4
13	270.0° - 292.5°	86	3	-7
14	292.5° - 315.0°	59	0	-23
15	315.0° - 337.5°	81	-1	-12
16	337.5° - 360.0°	69	-11	-12

Model:Ecoled Roll to roll
 Tester:Sergio Carneros
 Temperature:20Deg
 Manufacturer:Luz Negra

Number: 31.270
 Date:2025-06-17 08:12:27
 Humidity:50%
 Remarks:100cm de tira flexible